

CERTIFICATE OF LOCATION OF GOVERNMENT CORNER

NORTHEAST Corner of Section 23, Township 106, Range 42, 5TH P.M.

STATE OF MINNESOTA, County of MURRAY

At the corner location shown on the sketch:

On _____ found a _____
DATE

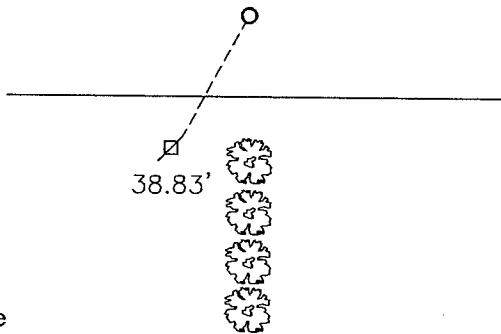
left monument as found, lowered monument, removed monument (explain)

On 07-15-2011 placed a 1" pipe with seal #43844.
DATE

SKETCH OF REFERENCE TIES



X
X
X




Minnesota State Plane Coordinate
System Murray County Datum
NAD83 (1996)

N: 147648.831
E: 479727.030

Statement of evidence relative to this corner location is on back of page.

I hereby certify that this document and the data contained herein was prepared by me or under my direct supervision.


SIGNATURE

1/23/12
DATE

Registration No. 43844

- Land Surveyor, Professional Engineer
 County Surveyor, County Engineer

OFFICE OF THE COUNTY RECORDER
County of _____

I hereby certify that this document was filed in the Co. Recorders office at _____ .M on the _____ day of JAN 25 2012 A.D. 20____

County Recorder James V. Johnson
By _____, Deputy

DOCUMENT NO. _____

Statement of Evidence

In 1866, J. W. Bishop did the original subdivision of the township.

On July 15, 2011, Bueltel-Moseng Land Surveying set a 1" pipe with seal #43844 in the center of the road and in line with the fence to the north. We did not dig because of a possible electric cable under the road.